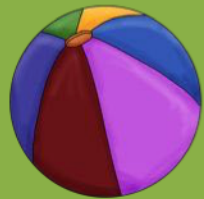




Living



and

Nonliving

To practice identifying and classifying *Living* and *Nonliving Things*, first sort the pictures on the sorting mat and then play Tic-Tac-Toe!

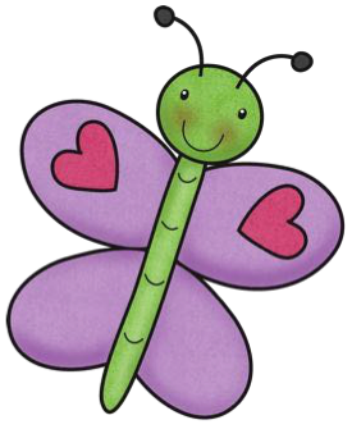
Activity One

Cut the picture cards apart. Students sort the picture cards onto the Living/Nonliving sorting mat. Students can do this activity independently or in a small group.

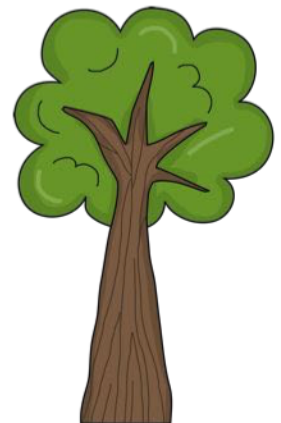
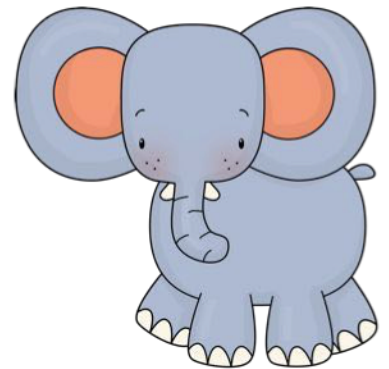
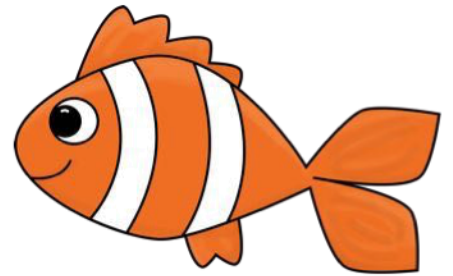
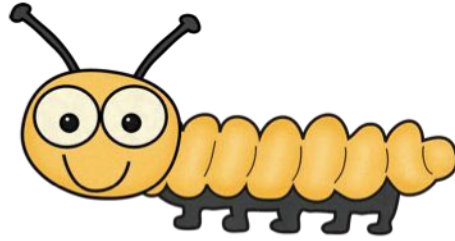
Activity Two

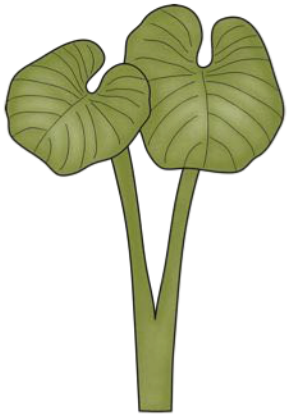
Use the picture cards to play Tic-Tac-Toe. One player plays with all *Living* things and the other player plays with *Nonliving* cards. Students take turns placing their picture cards on the Tic-Tac-Toe board. The goal is for a student to connect three of their picture cards horizontally, vertically, or diagonally on the game board

Complete the worksheet included by cutting and pasting pictures into the correct Living/Nonliving categories.

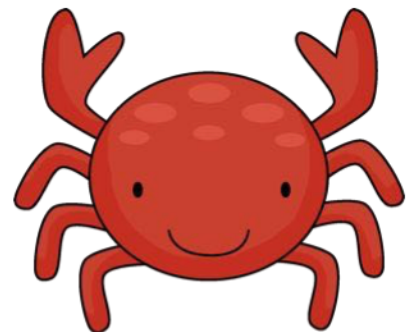
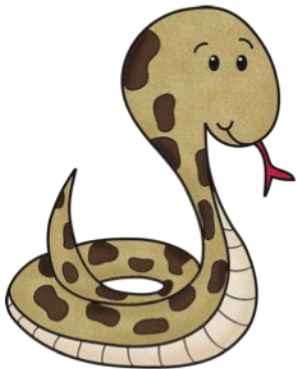
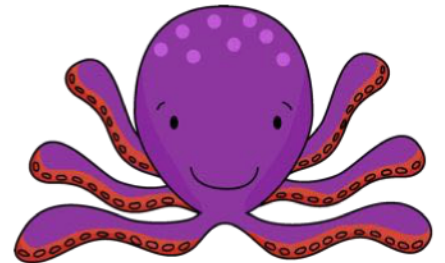
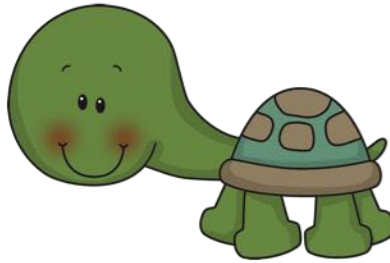
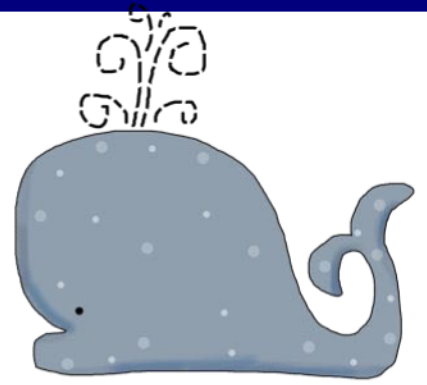


www.HaveFunTeaching.com



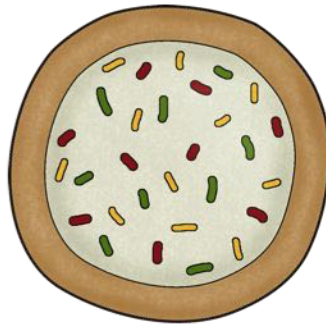
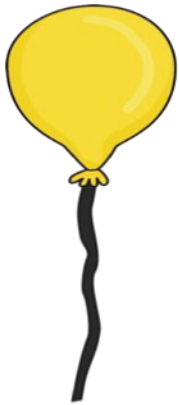
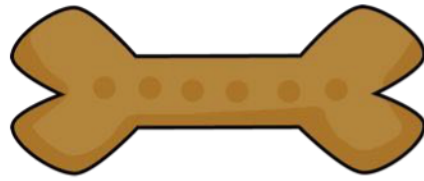


www.HaveFunTeaching.com



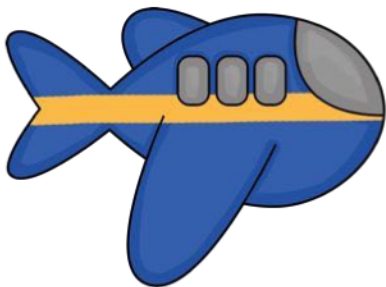
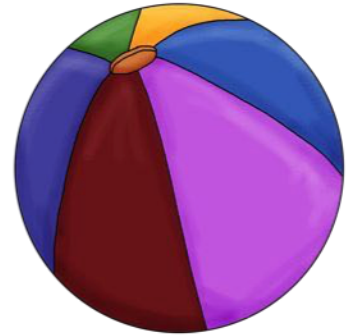
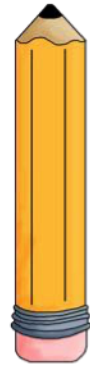
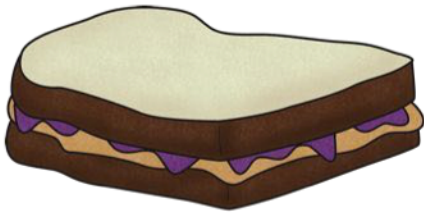
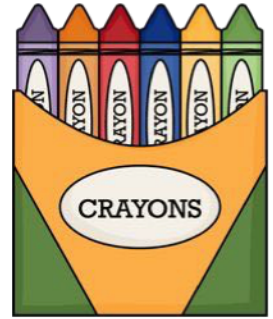
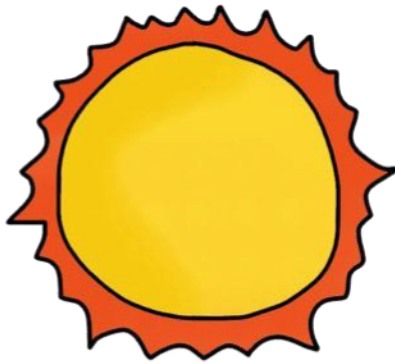


www.HaveFunTeaching.com





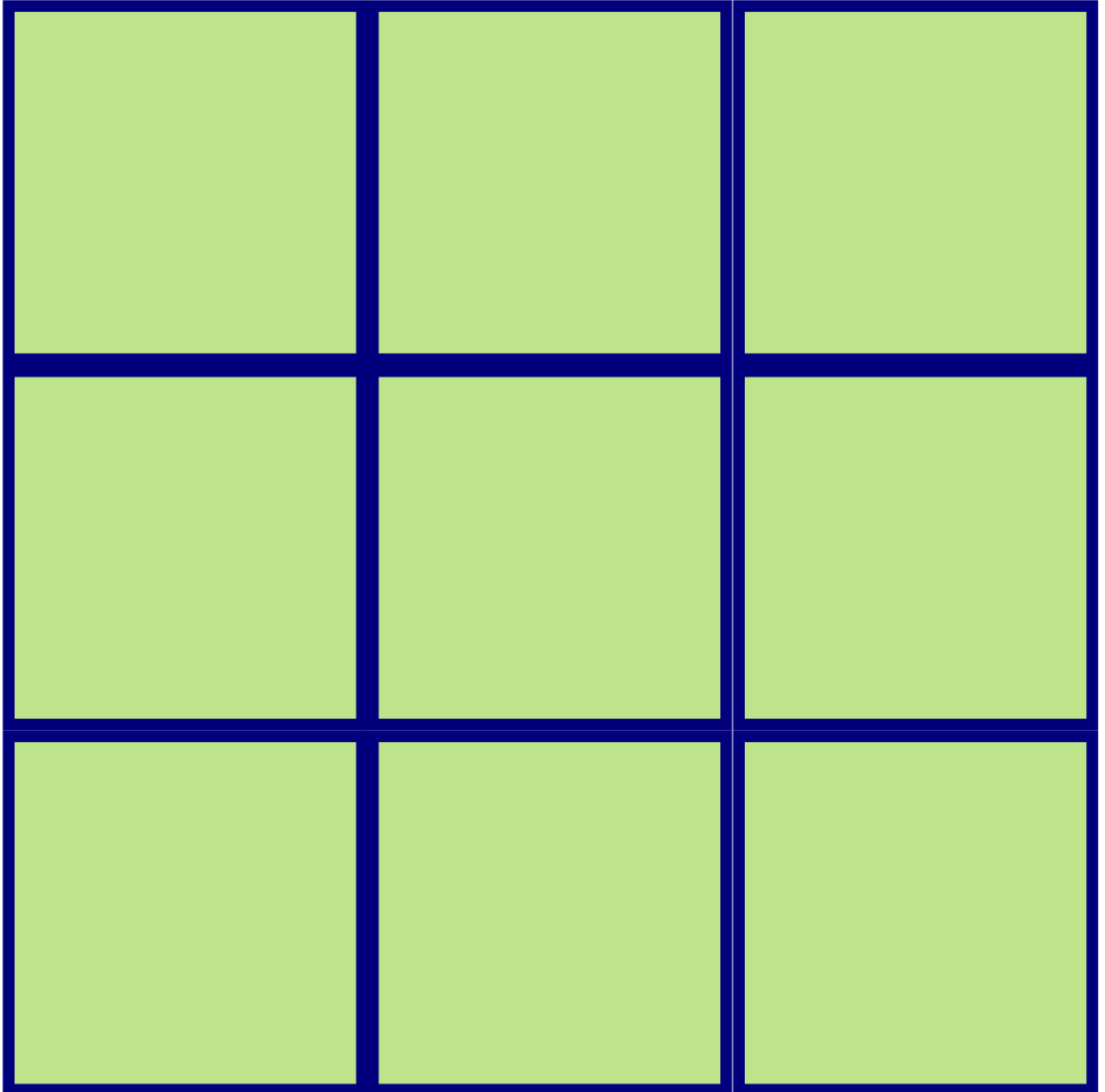
www.HaveFunTeaching.com



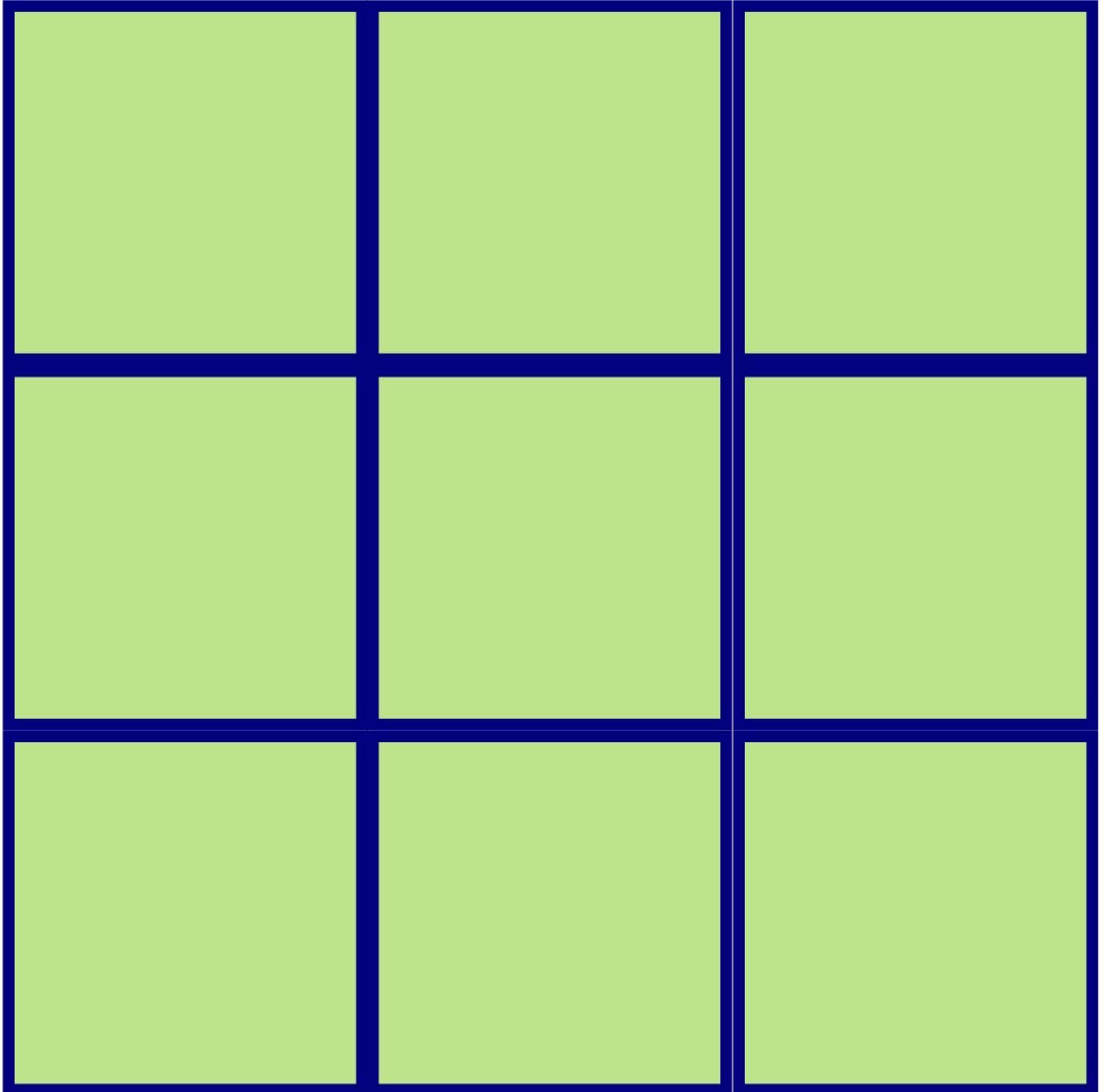
Living

Nonliving

Tic-Tac-Toe



Tic-Tac-Toe



Name _____

Directions: Cut and paste the pictures into the *Living* or *Nonliving* category.

Living

Nonliving

www.HaveFunTeaching.com

